

MIKASA TAMPING RAMMER MT-e55

Mikasa Tamping Rammers are perfectly balanced to deliver hard hitting compaction while ensuring optimised operator comfort. Engineered with a Vibration Absorbing System, motor guard and integrated control switch, the Mikasa Tamping Rammers offer superior build quality and excellent performance. Mikasa's battery powered compaction equipment range features a Honda eGX-Series electric motor which is powered by an interchangeable lithium-ion battery pack, capable of rapidly charging to 80% capacity in only 60 minutes. These zero emission and reduced noise level machines are a great alternative to the engine powered equivalents, especially when operating in noise and fume restricted environments.

Lifting hook

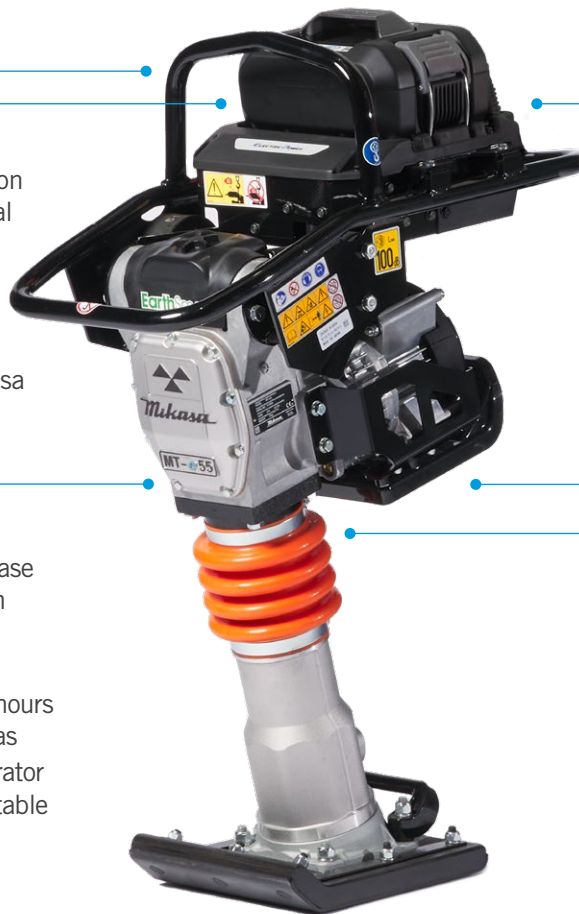
Central lifting hook for easy and safe onsite handling

Honda eGX battery

- Quick charging 72 volt lithium-ion battery for maximized operational productivity
- Reaches 80% charge in 60 minutes, fully charged in 90 minutes
- Interchangeable with other Mikasa battery powered soil compaction equipment

Honda eGX motor

- High-efficiency, high-power 3 phase brushless DC motor for maximum performance and reliability
- Zero operating emissions
- Low noise offers expanded work hours and usage in noise restricted areas
- Low motor vibration reduces operator fatigue, providing a more comfortable work environment



Variable speed

Variable speed motor allows for quick and easy selection of three operating speeds to suit most job site requirements

Motor guard

Fully protected motor to eliminate damage to critical motor components

Vibration Absorbing System

Low vibration handles for reduced hand and arm vibration transfer to the operator

POWERED by
HONDA

MIKASA TAMPING RAMMER



MT-e55



Model	Operating Weight (kg)	Shoe Size w x l (mm)	Jumping Stroke (mm)	Impact Rate (blows/m)	Max Impact Force (kN)	Average Travel Speed* (m/min)	Compaction Depth* (cm)	Motor Make & Model	Rated Power Cont / Max (kW)	Average HAV (m/s ²)	Run time (min)	Product Code
MT-e55	75	265 x 340	30-70	574-689	10.8	10.6	40-60	Honda GXE2.OS	1.6 / 2.4	3.6	up to 30 min	FT272787-UNIT

HONDA EGX BATTERY (SOLD SEPARATELY)

Battery Type	Battery Capacity (Ah)	Energy Content (Wh)	Battery Weight (kg)	Voltage (V)	Charge Time	Product Code
Li-ion	10	748	6.4	72	80% charge in 60 minutes 100% charged in 90 minutes	FT272790-UNIT



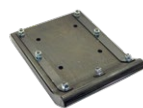
HONDA EGX CHARGER (SOLD SEPARATELY)

Charger Weight (kg)	Voltage (V/A)	Product Code
11.0	240 / 10	FT272791-UNIT



REPLACEMENT SHOE

Model	Product Code
MT-e55	NPS70638-UNIT



Replacement shoe

TRENCHING SHOE (115 MM WIDE X 330 MM HIGH)

Model	Product Code
MT-e55	NPS51907-UNIT



Trenching shoe

* Travel speeds vary based on different soil conditions. Specifications published are based on average performance results.

** 3 year warranty covers MT-e55 body only. Honda eGX battery and charger are covered by a separate 2 year warranty.

Conplant

1300 166 166 | info@conplant.com.au

EXCLUSIVE TO



This Technical Data Sheet (TDS) summarises our best knowledge of the product, based on the information available at the time. You should read this TDS carefully and consider the information in the context of how the product will be used. Our responsibility for products sold is subject to our standard terms and conditions of sale. Conplant does not accept any liability either directly or indirectly for any losses suffered in connection with the use of the product whether or not in accordance with any advice, specification, recommendation or information given by it.

© This publication is copyright. All rights are reserved. Flextool is a registered trade mark of Conplant Construction Supplies Pty Ltd. Mikasa is a registered trade mark of Mikasa Sangyo Co. Ltd, used under licence.